

Santa Cruz County Emergency Preparedness

Prepared, Not Scared.

September is National Preparedness Month - Be Ready for Disasters



Be Ready Personal + Family

September 1-7

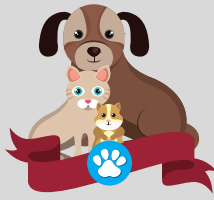
Create a Personal + Family Go Kit

Be Ready by ensuring the safety of you and your loved ones. Create a communication plan, gather go-kit supplies and items specific to the needs of your family to prepare for 72- hours in the event of an local emergency.

.....
Your family is unique, your go-kit should be too.

.....
Be Ready Resources:

- Go-Kit Supplies*
- Communication Plan*
- Unique Go-Kit Items*



Be Ready Pets

September 8-14

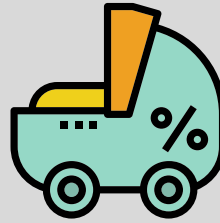
Tips for Animal Preparedness

Large or small, help your pet Be Ready by packing a go-kit including food, water, toys, vaccination records, and pictures of your pet(s).

.....
In a disaster, what is good for you, is also good for your pet.

.....
Be Ready Resources:

- Animal Go-Kit Tips*
- Animal Preparedness Quick Guide*
- Santa Cruz County Equine Evacuation*



Be Ready Pediatric

September 15-21

Caring for Children in Emergencies

Children may have extra accommodations before, during, and after an emergency. Teach children to Be Ready by creating a plan and have them build their own safety kit. According to FEMA,

.....
"Children who are prepared experience less anxiety and feel more confident during an actual emergency."

.....
Be Ready Resources:

- Pediatric Preparedness Tips*



Be Ready Power Safety

September 22-30

Public Safety Power Shutoff

Families, homes, and businesses Be Ready for a PG&E Public Safety Power Shutoff. PG&E is implementing precautionary measures to reduce the risk of wildfires.

.....
If extreme fire conditions threaten the community, it may be necessary to turn off electricity.

.....
Be Ready Resources:

- PG&E Community Wildfire Safety Program*



Public Health
Prevent. Promote. Protect.
Santa Cruz County

SEPTEMBER 2019 | #NPM

For more information visit : santacruzhealth.org/72hourready
www.ready.gov | www.CDC.gov/cpr | www.pge.com